



RETIME

Inclusive Urban Resilience

Urban Adaptation and Alert Solutions for a Timely Reaction

RETIME, co-funded by the EU, helps cities adapt to climate change with solutions for the current and future needs of all citizens. Focused on extreme weather anticipation, rapid emergency response, and lasting resilience, RETIME envisions urban spaces that protect lives and adapt to risks.

Place-based innovations for climate-resilient cities

RETIME offers **real-time monitoring and resilience-building resources to local inhabitants and decision-makers**, including local authorities, utility providers, and construction professionals. It develops a suite of adaptation solutions to build resilience, deliver timely alerts, and reduce the impact of storms, flash floods, wildfires and extreme temperatures.



Digital solutions for urban adaption and risk reduction



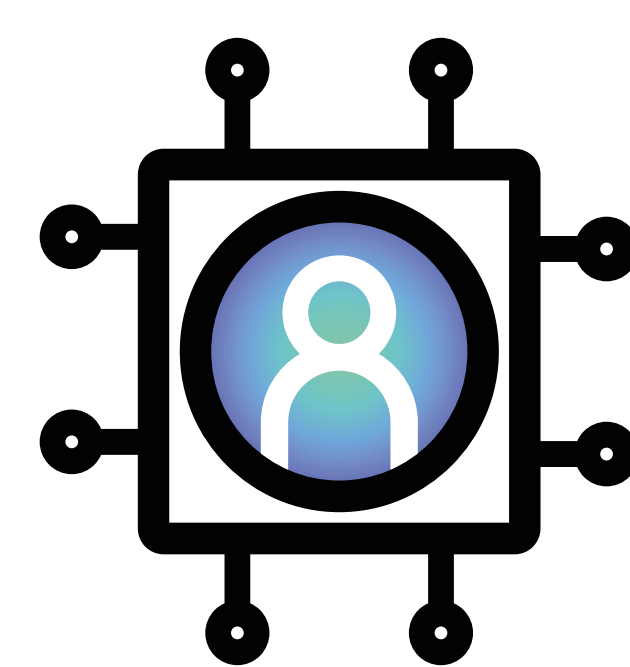
**A Sensor-Based IT
Automated Alert
System**



**A Building Digital
Twin**



**A Building Renovation
Passport**

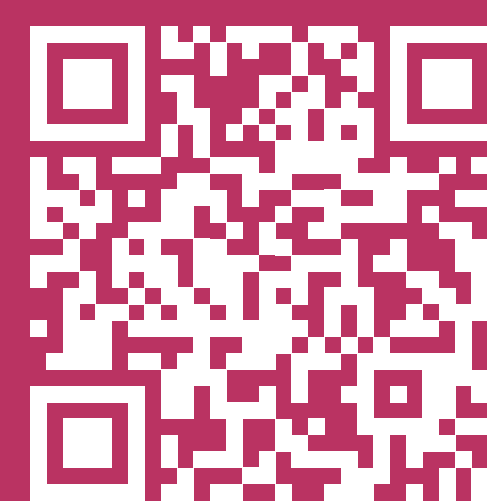


**A Resilience Knowledge
Hub and Decision
Support Platform**



RETIME strategies and tools help make cities safer and more inclusive. They ensure that the needs of all citizens, especially vulnerable groups, are considered by fostering collaboration between communities and professionals. These solutions are being designed and tested in **Lisbon, Žilina and Tartu**, ensuring real-world applicability and the potential for future replication.

→ Learn more, visit: retime-project.eu



iscte
...Conhecimento e Inovação

 UNIVERSITY
OF ŽILINA

DTU

WEC



I C O N S

 **one team**

Building Design Management
TUW

U.PORTO
FEUP FACULDADE DE ENGENHARIA
UNIVERSIDADE DO PORTO

LUXEMBOURG
INSTITUTE OF SCIENCE
AND TECHNOLOGY **LIST**

tecnal:a
MEMBER OF BASQUE RESEARCH
& TECHNOLOGY ALLIANCE

Deusto
Universidad de Deusto

**Technology
Arts Sciences
TH Köln**

 **ŽILINA
SELF-GOVERNING
REGION**

 **LISBOA**
UNIVERSITY OF LISBOA

 **Institute
of Baltic
Studies**

team | engineering
g r o u p consulting

VELTIS
First Real Estate Rating Agency



Co-funded by the European Union under grant agreement no. 101147113. Views and opinions expressed are however those of the author(s) only and do not necessarily reflect those of the European Union or CINEA. Neither the European Union nor the granting authority can be held responsible for them. HORIZON-CL5-2023-D4-02-02 – Efficient, sustainable and inclusive energy use – Innovation Action